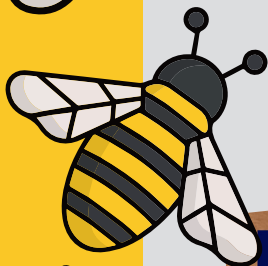




Table Tennis 365 Events Ltd

# HONEY BEE SERIES



**HONEY BEE SERIES**



WWW.TABLETENNIS365.CO.UK

## MATRAVERS HONEY BEE TT365 SENIOR & VETS EVENT

**VENUE: Matrovers School, Springfield Rd, Westbury, Wiltshire BA13 3QH**

**Event Official: Steve Pound. Email: [steve@tabletennis365.com](mailto:steve@tabletennis365.com)**

This is an all-day competition open to male and female players. It will be run on a double group system followed by a knockout! The groups will be organised based on current TT365 ranking. Unranked players may be placed in a higher group if deemed appropriate by the Organising Committee.

### EVENT INFORMATION

#### EVENT DATES:

**Saturday 26th October 2024, 09:00-18:00 (Seniors)**

**Sunday 27th October 2024 09:00-18:00 (Vets)**

**CLOSING DATE: Monay 18th October 2024 DRAW DATE: Friday 18th October 2024**

**RANKING LIST:TT365 Saturday 26th September 2024**

### PRIZE FUND - £600

#### MAIN EVENT

**Winner - £300. Runner-up - £150**

#### CONSOLATION

**Winner - £100. Runner-up - £50**

TT365 Ranking points apply

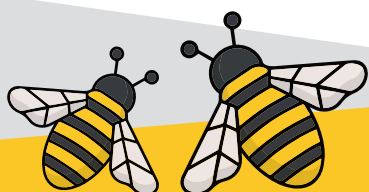
# TOURNAMENT INFORMATION



1. All entries must be completed by the closing date.
2. Entries can be submitted without payment, but payment must be made by the closing date to be fully accepted.
3. There will be a practical limit for entrants and entries to the events.
4. Entries for these events will be first come first served.
5. Play will be on (25mm ITTF certified) tables. The match balls will be STAG Global 3\* balls. Individual courts sizes will be 10m x 5m enclosed by surrounds. Scoring machines will be used for all matches.
6. Practice – There will be no separate practice facilities.
7. Changing – There are changing facilities.
8. All event groups are due to start at 09:00.
9. Players are expected to umpire matches when they lose.
10. Refunds for entries will only be issued to players who have withdrawn in the below timescale:
  - a, Prior to the closing date – full refund.
  - b, After the closing date but prior to the draw – full refund.
  - c, After the draw no refunds available.
11. If you find you are unable to attend the event or need to contact the organiser, please call Steve Pound 07710 400451 or email [steve@tabletennis365.com](mailto:steve@tabletennis365.com)
12. Entry Fees: £26 per event. Format will be run on a double group system followed by a knockout! Expected 7 matches per player minimum. All matches will be the best of 5 games.
13. Prize fund based on a minimum of 40 entries, with a max of 48, so prize funds could increase or decrease depending on final entries.
14. Photo & Live streaming could take place during this event which may include (but not limited to) using them in printed and inline platforms, social media and press releases. If you do not give permission to take photographs and/or video of you (or individuals for whom you are legally responsible) please contact [steve@tabletennis365.com](mailto:steve@tabletennis365.com).
15. Codes of Conduct – players and coaches are expected to conduct themselves as would be expected at a Table Tennis England event.
16. There is no age restriction.
17. Players must not wear shirts that are predominantly white.
18. Competitors will be permitted to practice on tables not in use at the discretion of the Referee.
19. No Competitor or official shall engage in betting on players or matches.
20. Doping shall not take place either before or during play.
21. All competitors must report to the control table and register on arrival and must not leave the venue without first obtaining permission from the Referee.
22. Competitors will be ranked, first using TT365 ranking and then a combination of TTE ranking, local league ranking and knowledge of the players standard.
22. The use of bats prepared with glue containing VOC's will not be allowed.
24. The Referee's decision shall be final on points of law on any questions arising not provided for in these regulations or in any dispute as to the interpretation thereof. Decisions on points of fact by an umpire or assistant umpire appointed by the Referee shall be final.
25. Any UK earnings/tax implications, and /or UK visa implications, arising from prize winnings at this event are strictly the responsibility of the participant.

**PRIZE FUND - £600**

**EVENT ORGANISERS:  
Ali Pearson & Simon Morgan**



# TOURNAMENT ENTRY FORM



This is a CLOSED Tournament Players must be members of TT365. You can join for FREE please contact the Referee. Steve Pound. [steve@tabletennis365.com](mailto:steve@tabletennis365.com)

**NAME:**

**ADDRESS:**

**POST CODE:**

**EMAIL ADDRESS:**

**MOBILE PHONE NUMBER:**

**TTE MEMBERSHIP NUMBER:**

**DATE OF BIRTH:**

**TT365 MEMBERSHIP NUMBER:**

**LOCAL LEAGUE PARTICIPATING IN (IF ANY):**

**SELECT EVENT:**

Senior Event 19th October =£26

Vets Event 20th October = £26

**TOTAL:** \_\_\_\_\_

Please give your permission for TT365 to maintain a record of your entry form details for tournament purposes.

