



Table Tennis 365 Events Ltd

HONEY BEE SERIES

Sponsored by



VENUE: The Bridge Leisure Centre.
Wickhurst Lane, Broadbridge Heath, Horsham. RH12 3YS

REFEREE: Steve Pound. steve@tabletennis365.com

SERIES DATES:

Sunday 27th October 2024, 15th December 2024, 20th April 2025

EVENT INFORMATION

EVENT DATE: Sunday 27th October 2024, 09:00-18:00

CLOSING DATE: Friday 15th September 2024

DRAW DATE: Thursday 24th October 24

RANKING LIST: TT365 10th October 24

PRIZE FUND - £2,700

BAND A = £2,100 (A1 = £500 1ST, £250 2ND, £200 3RD, £150 4TH, £100 5TH,

A2 = £200 1ST £100 2ND, A3 = £200 1ST, £100 2ND A4 = £200 1ST, £100 2ND

A5 = £200 1ST, £100 2ND A6 = £200 1ST, £100 2ND)

BAND B = £300 (B1 = £200 1ST, £100 2ND) BAND C = £300 (C1 = £200 1ST, £100 2ND)

TT365 Ranking points apply

TOURNAMENT INFORMATION



1. All entries must be completed by the closing date
2. Entries can be submitted without payment but payment must be made by the closing date to be fully accepted.
3. There will be a practical limit for entrants and entries to specific events.
4. Entries will be first come first served.
5. Play will be on 10 STAG Global Roma 24 tables (25mm ITTF Certified) and 5 Joola 22mm tables. The match balls will be STAG Global 3* balls. Individual court sizes will be 10m x 5m enclosed by surrounds. Scoring machines will be used for all matches.
6. Practice – There will be no separate practice facilities.
7. Changing – There are Leisure centre changing facilities.
8. All 3 events will begin at 09:00.
9. Players are expected to umpire matches within their group and where needed for play off matches.
10. Refunds for entries will only be issued to players who have withdrawn in the below timescale:
 - a. Prior to the closing date – full refund
 - b. After the closing date but prior to the draw – full refund
 - c. After the draw no refunds available.
11. If you find you are unable to attend the event or need to contact the organiser, please call Steve Pound 07710 400451 or email steve@tabletennis365.com
12. Entry fees for events £35. Format:
Band A = Morning 10 groups of 3 on 5 tables. Winners of groups play off each other, 2nd place in the group play off against each other and last in the group play off against each other to create 6 groups of 5. Afternoon 6 x groups of 5 on 6 tables. 7 matches each.
Band B = Morning 5 groups of 4, Afternoon 4 groups of 5. 7 matches each.
Band C = Morning 5 groups of 5, Afternoon further 5 groups of 5. 8 matches each.
15. Photo & Live streaming could take place during this event which may include (but not limited to) using them in printed and inline platforms, social media and press releases. If you do not give permission to take photographs and/or video of you (or individuals for whom you are legally responsible) please contact steve@tabletennis365.com.
16. Codes of Conduct – players and coaches are expected to conduct themselves as would be expected at a Table Tennis England event. Poor conduct could lead to a ban.
17. All matches will be the best of 5 games. Play for Band A will be initially 10 groups of 3 players. A further match after initial group will determine which group of 5 you are allocated in the afternoon. Band B will be 5 groups of 4 players in the morning. Winners of each group play in a winners group of 5 in the afternoon. The same for 2nd, 3rd and 4th placed

- positions from the morning group. Everyone in band B plays 7 matches. Band C will be 5 groups of 5 players in the morning and 5 groups of 5 players in the afternoon. Each player in Band C will play 8 matches.
18. There is no age restriction.
19. Players must not wear shirts that are predominantly white.
20. Competitors will be permitted to practice on tables not in use at the discretion of the Referee.
21. No Competitor or official shall engage in betting on players or matches.
22. Doping shall not take place either before or during play.
23. All competitors must report to the control table and register on arrival and must not leave the venue without first obtaining permission from the Referee.
24. Competitors will be placed in a list from 1 to 75 in order of ranking , using a combination of TT365 ranking, TTE ranking, Vets society ranking, Local League ranking and knowledge of the players standard. The top 30 will play in Band A, the next 20 will play band B and the final 25 will play Band C.
25. The use of bats prepared with glue containing VOC's will not be allowed.
26. The Referee's decision shall be final on points of law on any questions arising not provided for in these regulations or in any dispute as to the interpretation thereof. Decisions on points of fact by an umpire or assistant umpire appointed by the Referee shall be final.
27. Any UK earnings/tax implications, and /or UK visa implications, arising from prize winnings at this event are strictly the responsibility of the participant.

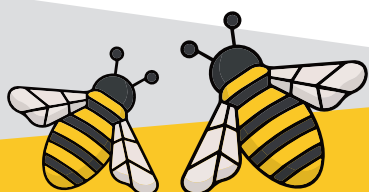
PRIZE FUND - £2,700

BAND A = £2,100

BAND B = £300

BAND C = £300

TT365 Ranking points apply



TOURNAMENT ENTRY FORM



This is a CLOSED Tournament Players must be members of TT365. You can join for FREE please contact the Referee. Steve Pound. steve@tabletennis365.com

NAME:

ADDRESS:

POST CODE:

EMAIL ADDRESS:

MOBILE PHONE NUMBER:

TTE MEMBERSHIP NUMBER:

DATE OF BIRTH:

TT365 MEMBERSHIP NUMBER:

LOCAL LEAGUE PARTICIPATING IN (IF ANY):

EVENTS ENTERED:

Banded event **£35 yes / no**

TOTAL:

Please give your permission for TT365 to maintain a record of your entry form details for tournament purposes.

