



tabletennis **365**

Table Tennis 365 Events Ltd

# HONEY BEE SERIES

Sponsored by

**STAG**  
GLOBAL



**VENUE:** The Bridge Leisure Centre.  
Wickhurst Lane, Broadbridge Heath, Horsham. RH12 3YS

**REFEREE:** Steve Pound. [steve@tabletennis365.com](mailto:steve@tabletennis365.com)

**SERIES DATES:**

15<sup>th</sup> December 2024, 20<sup>th</sup> April 2025

## EVENT INFORMATION

**EVENT DATE:** Sunday 15th December 2024 - 09:00-18:00

**CLOSING DATE:** Sunday 1st December 2024

**DRAW DATE:** Wednesday 11th December 2024

**RANKING LIST:** TT365 Friday 27th September 2024

## PRIZE FUND - £3,000

**BAND A (UNDER 2600 RANKING POINTS) WINNER £700 RUNNER UP £300**

**BAND B (UNDER 2300 RANKING POINTS) WINNER £700 RUNNER UP £300**

**BAND C (UNDER 1800 RANKING POINTS) WINNER £700 RUNNER UP £300**

TT365 Ranking points apply

Prize money conditional on a full entry of 75 players. Should there be less players prize money will be reduced.

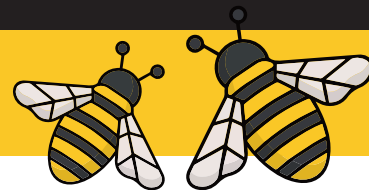
**HONEY BEE SERIES**

tabletennis **365**

WWW.TABLETENNIS365.CO.UK



# TOURNAMENT INFORMATION



1. All entries must be completed by the closing date
2. Entry fee to be paid by banc transfer to:  
Table Tennis 365 Events Ltd  
Account – 36042986  
Sort code 60-12-12
3. There will be a practical limit of 25 players per Band for entrants and entries to specific events.
4. Entries will be first come first serve.
5. Play will be on 10 STAG Global Roma 24 tables (25mm ITTF Certified) and 5 Joola 22mm tables. The match balls will be STAG Global 3\* balls. Individual court sizes will be 10m x 5m enclosed by surrounds. Scoring machines will be used for all matches.
6. Practice – There will be no separate practice facilities.
7. Changing – There are Leisure centre changing facilities.
8. All 3 events will begin at 09:00.
9. Players are expected to umpire matches within their group .
10. Refunds for entries will only be issued to players who have withdrawn in the below timescale:
  - a. Prior to the closing date – full refund
  - b. After the closing date but prior to the draw – full refund
  - c. After the draw no refunds available.
11. If you find you are unable to attend the event or need to contact the organiser, please call Steve Pound **07710 400451** or email [steve@tabletennis365.com](mailto:steve@tabletennis365.com)
12. Band A= Morning 5 groups of 5, Afternoon further 5 groups of 5. 8 matches each.  
Band B= Morning 5 groups of 5, Afternoon further 5 groups of 5. 8 matches each.  
Band C= Morning 5 groups of 5, Afternoon further 5 groups of 5. 8 matches each.
13. Photo & Live streaming could take place during this event which may include (but not limited to) using them in printed and online platforms, social media and press releases. If you do not give permission to take photographs and/or video of you (or individuals for whom you are legally responsible) please contact [steve@tabletennis365.com](mailto:steve@tabletennis365.com).
14. Codes of Conduct – players and coaches are expected to conduct themselves as would be expected at a Table Tennis England event.
15. All matches will be the best of 5 games. Play throughout will be in groups of five for men and women (At the Referee's discretion, banded singles events may be played in groups of Four) with the first two players qualifying. The final order in a group shall be determined as per ITTF regulation 3.7.5 for group competitions except that where a player concedes a match, he/she shall receive -3 group points (x).
16. Restricted to 16 and over as of the 1st Jan 2024.
17. Players must not wear shirts that are predominantly white.
18. Competitors will be permitted to practice on tables not in use at the discretion of the Referee.
19. No Competitor or official shall engage in betting on players or matches.
20. Doping shall not take place either before or during play.
21. All competitors must report to the control table and register on arrival and must not leave the venue without first obtaining permission from the Referee.
22. To qualify players MUST be members of TT365 through their local League, MUST be registered to a TT365 local League team and conform to the following ranking parameters:
23. Banded event – Competitors will be placed in a list from 1 to 25 in order of ranking , using TT365 ranking. Band A for players Under 2600 TT365 Ranking points AND less than 1000 TTE points, Band B for players under 2300 TT365 ranking points AND less than 800 TTE points and Band C for players under 1800 TT365 ranking points AND less than 500 TTE points. The Referee reserves right to re-rate players that are believed to be wrongly rated.
24. The use of bats prepared with glue containing VOC's will not be allowed.
25. The Referee's decision shall be final on points of law on any questions arising not provided for in these regulations or in any dispute as to the interpretation thereof. Decisions on points of fact by an umpire or assistant umpire appointed by the Referee shall be final.
26. Any UK earnings/tax implications, and /or UK visa implications, arising from prize winnings at this event are **strictly the responsibility of the participant.**

## PRIZE FUND - £3,000

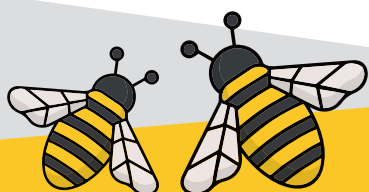
### BANDED EVENT WINNERS:

**BAND A = WINNER £700 RUNNER UP £300**

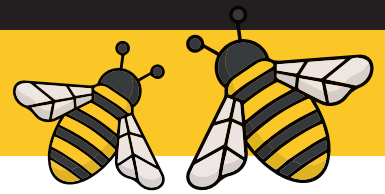
**BAND B = WINNER £700 RUNNER UP £300**

**BAND C = WINNER £700 RUNNER UP £300**

TT365 Ranking points apply



# TOURNAMENT ENTRY FORM



This is a CLOSED Tournament Players must be members of TT365. You can join for FREE please contact the Referee. Steve Pound. [steve@tabletennis365.com](mailto:steve@tabletennis365.com)

**NAME:**

**ADDRESS:**

**POST CODE:**

**EMAIL ADDRESS:**

**MOBILE PHONE NUMBER:**

**TTE MEMBERSHIP NUMBER:**

**DATE OF BIRTH:**

**TTE MEMBERSHIP NUMBER:**

**TT365 MEMBERSHIP NUMBER:** (usually the same as TTE membership number)

**LOCAL LEAGUE PARTICIPATING IN**

**EVENTS ENTERED:**

Banded event ..... £35 yes / no

**TOTAL:** .....

