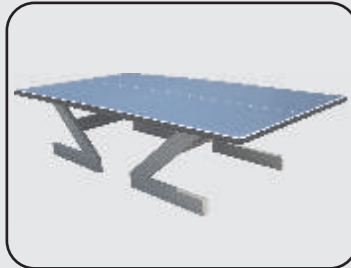




STEP - 4 Repeat step 3 for second half

STEP - 5

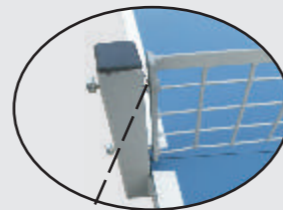


Bring both the complete halves together, attach post (P5) with table frame at both sides using nut & bolt size 20x8mm (P8) & tighten it with the help of two spanners (P14)

STEP - 6



Place the net (P6) into post (P5) using bolt size 38mm (P9) & tighten it with the help of two spanners (P14)



Washer (P12) between (P5) & (P6)

STEP - 7



Insert the rod (P11) through legs-Z (P2) using a hammer. Repeat this on all four legs



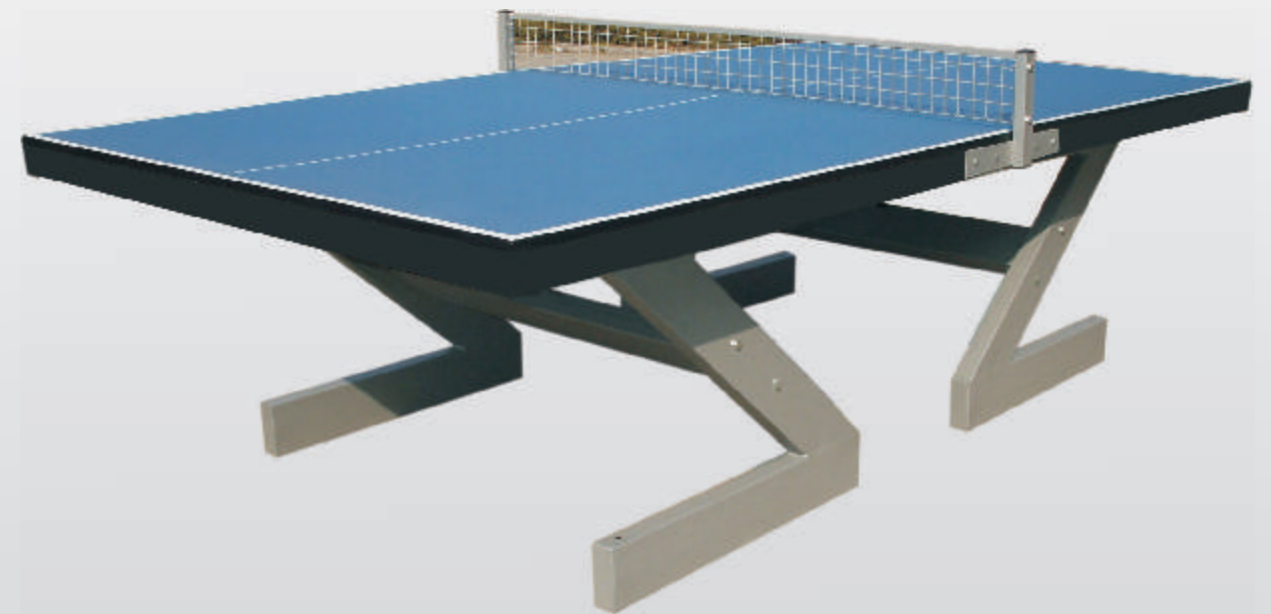
YOUR TABLE IS NOW READY FOR PLAY

SAFETY INSTRUCTIONS

Children below 14 years should not assemble the table.
This table is suitable for indoor and outdoor use.
Always cover the table when not in use

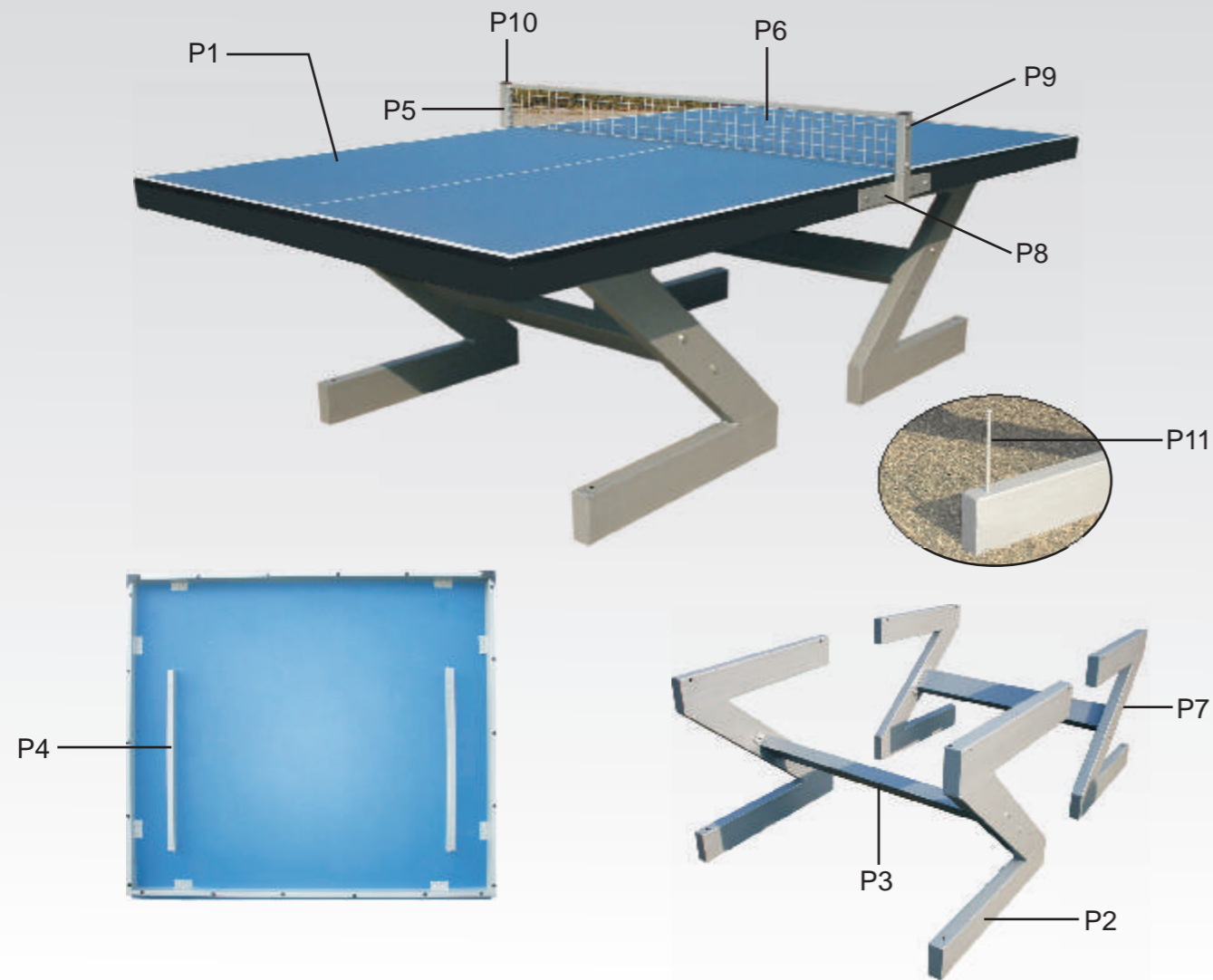


Table Tennis Table City Concrete Outdoor Assembly Instructions



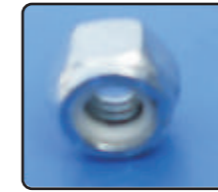


PARTS LIST



1. TABLE TOP SIZE 1525x1370x35MM- 2 NOS.
2. LEGS (Z) SIZE 765x730x125x50MM - 4 NOS.
3. CENTRE PIPE TO ATTACH LEGS SIZE 1205x125x50MM - 2 NOS.
4. ANGLE TO ATTACH TABLE FRAME WITH LEGS (Z) SIZE 75x9MM - 8 NOS.
5. POST SET - 1 NOS.
6. STEEL NET - 1 NOS.
7. BOLT TO ATTACH LEGS (Z) WITH CENTRE PIPE SIZE 75x9MM - 8 NOS.

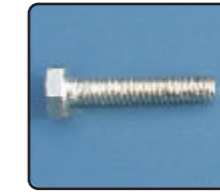
8. BOLT TO ATTACH SIDE FRAME WITH POST SIZE 20x8MM - 8NOS.
9. BOLT TO ATTACH POST WITH NET SIZE 38MM- 4 NOS.
10. PLASTIC CAP FOR POST SIZE 25x38MM - 4 NOS.
11. ROD TO ATTACH LEGS WITH GROUND SIZE 9x200MM - 4 NOS.
12. WASHER SIZE 9MM - 4 NOS.
13. SPANNER SIZE 9x7.5MM - 2 NOS.
14. SPANNER SIZE 6x7.5MM - 2 NOS.



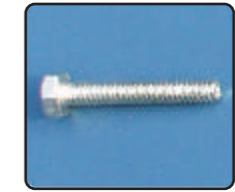
P4 & P7
SIZE 9MM QTY. 16



P4 & P7
SIZE 75x9MM QTY. 16



P9
SIZE 38MM QTY. 4



P8
SIZE 20x8MM QTY. 8



P11
SIZE 9x200MM QTY. 4



P12
SIZE 9MM QTY. 4



P5
QTY. 4



P2
SIZE 765x730x125x50MM QTY. 4



P3
SIZE 1205x125x50MM QTY. 2



P6 QTY. 1



P13 - SIZE 9/7.5MM QTY. 2



P14 - SIZE 6/7.5 QTY. 2

ADULT ASSEMBLY REQUIRED

Please read the safety instructions at the bottom of page- 4

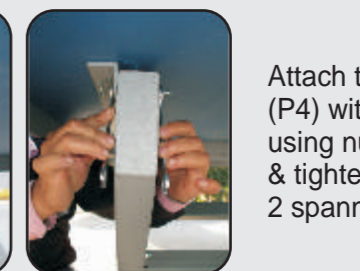
STEP - 1



Attach centre pipe (P3) with legs (P2) using nut & bolt size 75x9mm & tighten it with help of to spanners (P13)

STEP - 2 Repeat step 1 for second half

STEP - 3



Attach table frame angle (P4) with legs (Z) (P2) using nut & bolt size 75x9mm & tighten it with the help of 2 spanners (P13)